



HIKING BOOT

National Park Postcards Series

English Paper Pieced

A Fiona Sandwich Pattern



Makes 1 4.5 x 9" and 1 4.5" square block

General Tips:

Be sure to have all the arrows point in the same direction. This will alleviate any stress from pieces being swapped, and piecing headaches.

This is a project that is best to glue baste, because of the size of the pieces.
Please use copy paper instead of cardstock.

I have put piecing instructions for each block, but they aren't required. They may be helpful for you.

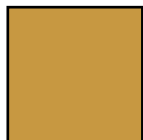
Please be sure to use hashtag #NationalParkQuilt so I can see your lovely work, and follow your progress! I can't wait to see how you piece through the National Parks!

For tips and terms, please visit fionasandwich.com/blog and my youtube channel. I have tips on easing, working with small pieces, etc.

Fabric Selection Tips:

Below are suggestions, based on the MODA Bella Solids Panel: My Favorite Color is Moda. There are differences between digitally printed and dye lots; please use the color suggestions as suggestions and not gospel. You don't need to rush out a purchase each solid I suggest! I would suggest purchasing the panel, and referring to the colors listed if you are stuck. Then use your imagination! Select fabrics in your stash! Feel free to change the colors to match your experiences in a park.

In homeopathy, there is a saying, "similimus similimum" - it's the law of similars. The law is not "exactamus exactimum" :) Choose SIMILAR fabrics, not exact fabrics!



Background: Moda
68 Fig Tree Wheat



Boot body: Moda
106 Earth



Toe & Heel: Moda
427 Soil



Sole: Moda 283
Lead

Creativity Declaration: I am a creative person! I have more creativity than I know what to do with! I separate myself from the lies of "I can't" that my mind has believed in the past!

Copyright: This pattern cannot be duplicated for commercial use, or for friend, foe, or family. You may print and use this as many times as you'd like for personal use.

Tips for Tiny Pieces - This example uses an enclosed rectangular shape, but the principles can be used for any small pieces. I have a blog post and a video on this, but sometimes pictures are more helpful.



1. Put a bit of glue on the back of the paper template to hold the piece in place.



2. I almost always start gluing with the shortest edge. To deal with the corners, I pinch them to create a 45 degree angle. It doesn't really matter how the seams nest. It matters more to me how tight the pieces can fit together.



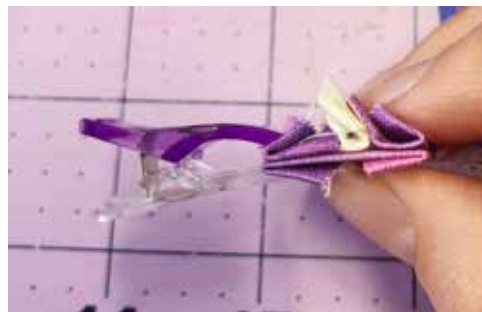
3. When you are basting the small piece think of the order they need to be joined. For the example, you can see that I did not baste the top (shown on the bottom, where my finger is, or the sides. I am most concerned about joining the middle piece (beige) to one purple piece, then attaching another purple piece on the other side.

See that only 2 sides of the 2 pieces are basted, and they are joined in the middle. After they are joined, I will lift the sewn edge on the beige piece, and open it. Then I will glue the opposite edge to the template. Then sew the additional purple piece, so the beige piece is enclosed.

Again, my goal at this stage is to join purple-beige-purple, then the piece along the bottom. I'm not concerned with basting all sides.



4. Now I have a straight edge. Since the 3 pieces are joined, and I must join the next piece, I will lift the sewn edges of the purple pieces, and baste the exterior edges. I still have not basted the opposite edge. You will now have 3 sides basted.



5. You will notice that the bulk of the fabric made one unit longer than the other. This is ok! Clip one edge to hold in place - make sure that the corners line up as best you can. Take a couple stitches, then line up the other end, and use your thumb to ease in place.

6. Lift up the seams in the corners on the opposite side, and baste the pieces to create a straight line (it should look like Step 4. Baste and repeat Step 5.

How to Glue Baste Acute Angles



1. Place glue along the tip of the triangle. I am not concerned about leaving a gap of unglued paper. I am more concerned about tight seams.

It is also helpful to place glue on the fabric seam allowance as well. This ensures the the fabric sticks together.

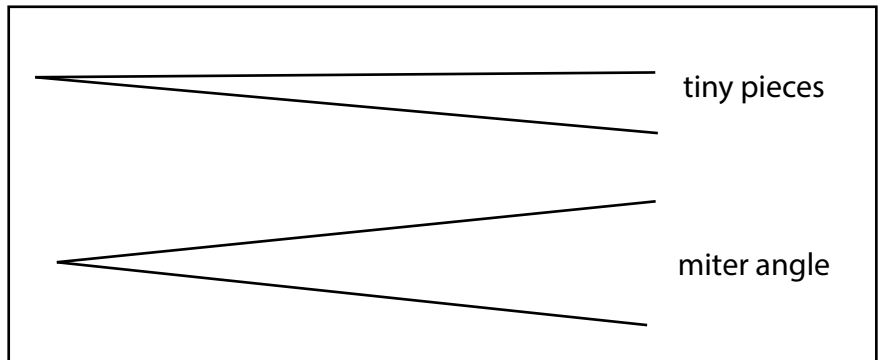


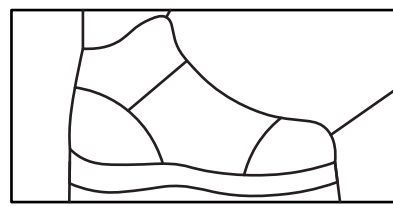
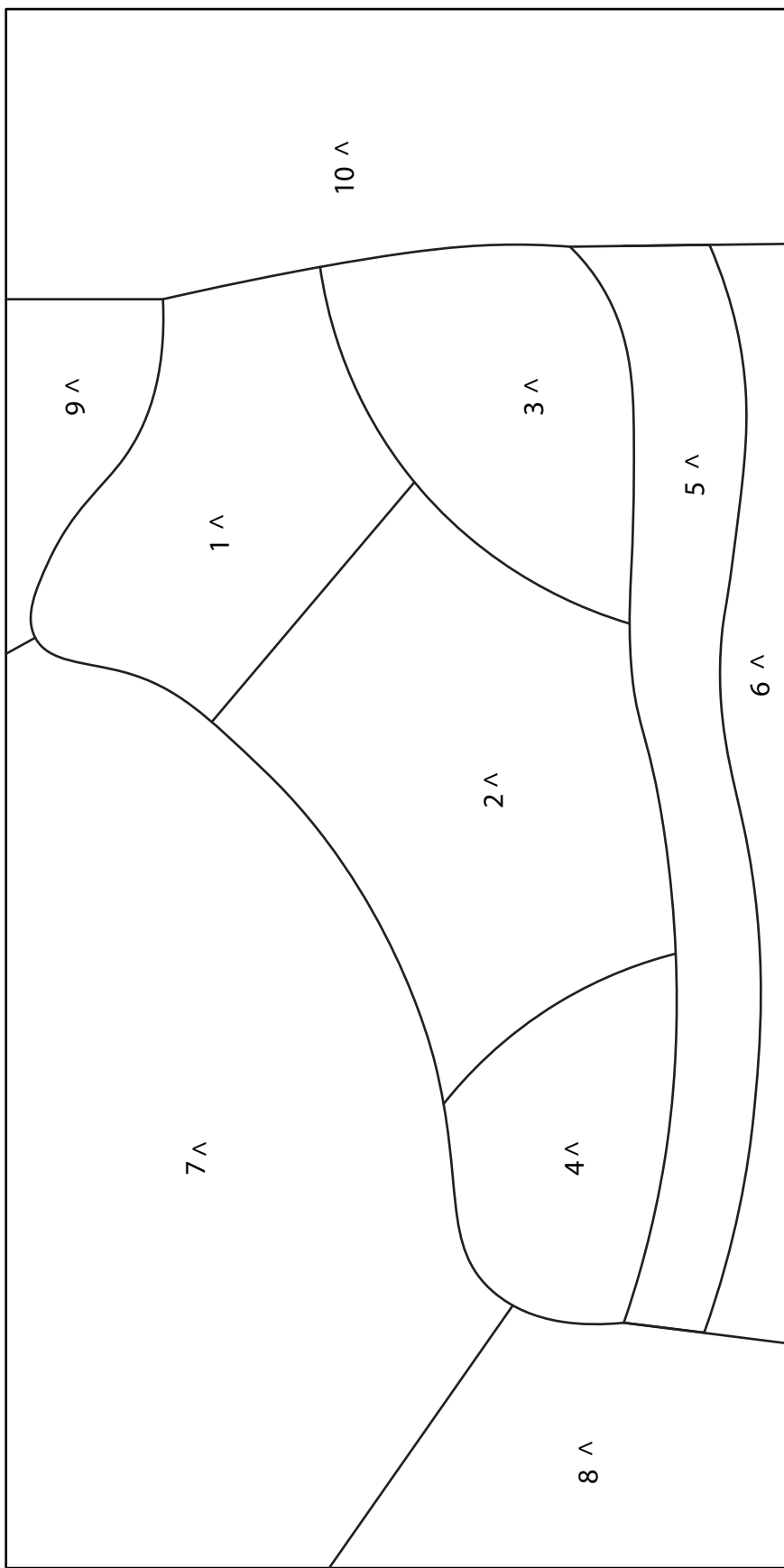
2. Using both thumbs, and supporting the template piece with your index fingers, press the fabric together. Make sure that the fabric is taught along the edge of the template!



3. Pinch the end of the fabric to create a tight piece. Note how tight the fabric is along the edges of the template.

Which method to use? Identify the angle below, and the corresponding method





Hiking Boot

Join 1 to 2.

Tape pieces 3 & 4 to 1-2, and join.

Join 5 to 1-4, ease if necessary.

Join 6 to 1-5, ease if necessary. Set aside.

Join 7 to 8.

Tape 7-9 to 1-6. Join along pieces 1-6. Join 7 to 9 last.

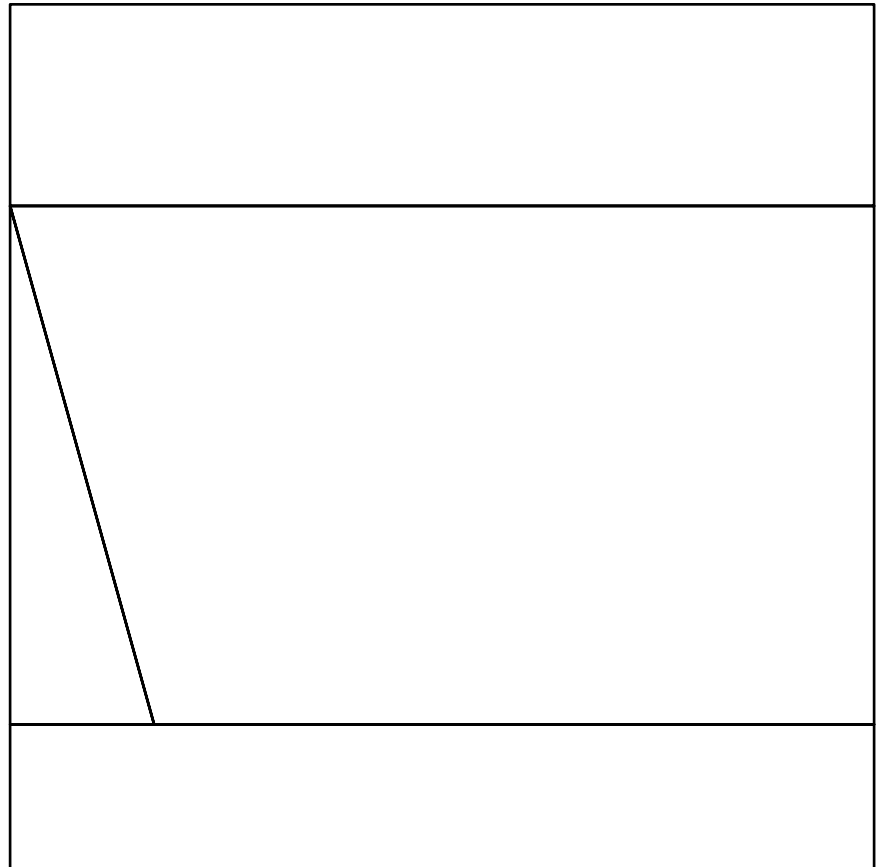
Join 10 to 1-9.

NATIONAL PARK SIGN:

This is the special block you can sew your commemorative National Park patches to!

You can flip the direction of the sign by gluing your fabric to one side or the other.

Sew the triangle to the sign, then the either the top or the bottom to the sign.



1" test
print
square